



NEWSLETTER

Dates for Your

DIARY



Monday 05 January 2026

Inset Day (School closed)

Tuesday 06 January 2026

First Day Back

Thursday 12 February 2026

Valentines Movie (PTA Event)

Friday 13 February 2026

Last Day

16—20 February 2026

Half Term (School Closed)

Monday 23 February 2026

First Day Back

Thursday 5 March 2026

World Book Day

Friday 20 March 2026

Red Nose Day

A message from

Miss Minter



Hello everyone,

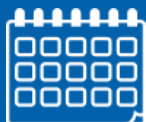
As we start to close the Autumn term and look back on what has been an exceptionally busy and productive few months at Beck Row, I am incredibly proud of what our pupils, staff and families have achieved together.

It would be easy to focus solely on headline measures, but the data from this term does deserve recognition. Across year groups, attainment and progress indicators show a clear upward trend when compared with previous cohorts and national benchmarks. Not only are we internally proud, but Beck Row has also been noted as the highest performing primary school in the local area. Early phonics assessments indicate strong foundations in reading, with a higher proportion of pupils on track by the end of the term than at the same point last year. Writing outcomes show increased stamina, accuracy and ambition, while maths assessments reflect secure number fluency and growing confidence in problem-solving.

However, I want to be very clear: while high expectations for results, attendance and uniform are important – and they are - they are not the sum of what we value at Beck Row. They are the framework, not the purpose.

What truly underpins our strong results is the quality of the experience children receive every day. Extensive educational research tells us that pupils learn best when they feel nurtured and excited about learning. This term has been rich in enrichment opportunities that go far beyond the classroom. Pupils have taken part in themed learning days, practical science investigations, outdoor learning, creative arts projects and sporting opportunities that promote teamwork, resilience and joy. These experiences are not “extras”; they are central to developing curious, motivated learners.

Nurture has remained a core priority. Our pastoral support, targeted interventions and emphasis on emotional literacy have ensured that children are ready to learn and feel valued as individuals. A growing body of evidence shows that strong relationships between staff and pupils directly impact academic success, and this is something our team excels at. The warmth, care, calm and ‘buzzy’ environment in our school continues to be commented on by visitors and families alike. Our newly introduced ‘social time’ to ‘learning time’ transition has worked well. I encourage parents to approach staff if they have concerns regarding implemented strategies before expressing elsewhere. Our strategies are executed based on many pedagogical tools and studies. For example, the idea of silence being a ‘sanctuary’, was the basis of our introduction to our transitional time post break and lunch, and as aforementioned, it has worked well, reduced first aid incidences and created calmer learning environments.



Continued....

Wednesday 25 March 2026

Spring Performance Yr 3/4

Thursday 26 March 2026

Easter Bonnets

Friday 27 March 2026

Last day of term

Monday 13 April 2026

First Day Back

The current Term Dates can be found [here](#)

Please note dates may change but we will do our best to keep you updated.

This term has also marked the completion of the building works for this phase of development, and the results are genuinely impressive. The improved learning spaces are modern, purposeful and designed with children's needs in mind. Research consistently highlights the impact of high quality learning environments on concentration, behaviour and outcomes, and we are already seeing the benefits in how pupils engage with their learning and take pride in their school.

In short, our results are strong because our approach is balanced. We care deeply about achievement, but we care just as deeply about enrichment, fun, nurture and providing an environment where children can thrive academically and personally. As we move into the Spring term, we do so with confidence, ambition and a continued commitment to giving every child at Beck Row the very best.

No school is perfect, and there are still challenges to overcome at Beck Row. We are all aware of these. But we are confident with time, and stable staffing, we will continue to strengthen our educational offer.

I would like to thank the parents and carers at Beck Row for the support you show us as a school. I would also like to personally thank the Buddies for the astronomical effort, loyalty and commitment you put into the families and children at our school. And lastly, I would like to thank every member of staff for their passion, drive and for making Beck Row a great place to be.

Have a wonderful rest of the week and a joyful Christmas when it arrives.

Charley Minter

Pastoral Patch

Pastoral Care at Christmas

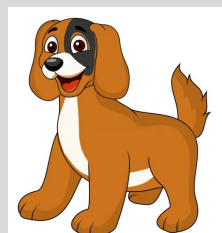
As we head towards the excitement of Christmas, we know this time of year can bring lots of joy, sparkle and celebrations for our children — but it can also feel a little overwhelming for some. In school, we are taking extra care to support children's wellbeing, helping them to talk about their feelings and enjoy the season in a calm and positive way.

Our focus has been on kindness, gratitude and looking after one another. Through class activities, stories and assemblies, children are reminded that small acts of kindness can make a big difference, especially at this time of year.

If your child is feeling tired, worried or unsettled, please remember that our pastoral team is always here to help. We are happy to listen and support both children and families — whether it's a small concern or something you'd just like to talk through.

Thank you for your continued support this term. We wish all our families a warm, happy and peaceful Christmas.

Mrs Jones





Safeguarding

Winter Holiday Newsletter – Stay Safe & Have Fun!

Dear children and families ,

As we get ready for the Christmas break, everyone at school would like to wish you a joyful, relaxing, and safe holiday! Here are some friendly reminders to help you enjoy the festive season.

Keeping Safe Over the Holidays

- **Stay visible!** It gets dark early in winter, so remember to wear bright or reflective clothing when you're out and about
- **Online safety matters.** If you're using tablets, phones, or games, always check with a trusted adult before going on new websites or talking to people online
- **Road safety first.** Whether you're walking, cycling, or scooting, make sure you stop, look, and listen before crossing the road
- **Weather-wise!** If it's icy or snowy, walk carefully to avoid slips. Wrap up warm with hats, gloves, and cosy coats

Fun Ways to Enjoy the Break

- **Read a festive story** or visit your local library
- **Get creative** with crafts, drawing, or making decorations
- **Spend time with family** playing games, cooking together, or enjoying a winter walk
- **Try something new!** A new hobby, recipe, or book can make the holidays exciting

Being Kind This Christmas

Christmas is a wonderful time to show kindness. A smile, a thank you, or helping someone at home can make a big difference. Remember—kindness is a gift everyone can give!

See You in the New Year!

We hope you all have a magical Christmas break filled with rest, laughter, and fun. Stay safe, enjoy your time off, and we look forward to welcoming you back to school in the new year!

Merry Christmas and Happy Holidays!

Suffolk Families

A magazine packed full of useful parenting articles and up to date information for families living in, or visiting Suffolk. The magazine brings useful, interesting and informative articles supported by a number of Suffolk businesses, charities and organisations. We focus on news, views and information to provide you with a valuable resource for everyday family life.

Access it here [Families Reader](#)



KS1: Animal Encounters

On Tuesday 16th December, we were very lucky to have a visit from the Animal Encounters Workshop!

We met exciting animals such as a gecko, cockroaches, a snake, a tenrec, a toad, a tarantula, a tortoise and rabbits! We learnt about their habitats and the groups they belong to. The children had the opportunity to touch and hold some of these animals and I was very impressed with how brave they were!



It's been a busy half term.....

Year 4: Instrumental Performance



Earlier this month, the Year 4 students performed for the school, showcasing everything they have been learning in their music lessons. Learning an instrument requires a great deal of focus and patience, and we are very proud of all the students.



EYFS: Radio Santa

Florence Nightingale were very lucky and each child got to talk to Santa via a walkie talkie. He called them from the North Pole and knew what they all wanted for Christmas!

Thank you to the USAF Mildenhall for making this possible

Yr 3/4: Stone Age Day

In Ernest Shackleton Class, we enjoyed Stone Age Day this week.

In Maths, the children explored Stone Age cave paintings and experimented with creating their own number systems using simple symbols. In English, they wrote clear and practical survival guides for life in the Stone Age.

In the afternoon, the class took part in spear-throwing practice and worked together to build small wooden huts. Then finished the day with a Stone Age survival game on the computers, which proved very popular

It was a fantastic day that helped bring this period of history to life!



It's been a busy half term.....

Christmas Fete

Thank you to all our parents and carers who made our Fete a festive success. The monies raised will go back into the school to enable more experiences, resources and most importantly fun!



iRock Concert

On Monday 8th December, we had a whole school assembly from our iRock rockers who have been working hard all term to recreate their favourite songs. It is always great to watch the progress of these bands and is a great opportunity for our school to celebrate the hard work, talent and achievements of one another.



EYFS: Nativity

Our EYFS children delighted their parents with a wonderful Nativity performance, filled with confidence, joy, and festive cheer. Every child shone in their role, showing great bravery and enthusiasm on stage. We are incredibly proud of how hard they worked and the smiles they brought to everyone watching.



KS1: Carol Concert

This week KS1 have been working really hard practicing for the Christmas carol concert. They have loved learning the new songs and all of the actions. I believe I am echoing how staff at Beck Row feel on how proud we are for our little ones to stand on that stage and sing to not just the whole school but to all of you amazing, committed parents/ adults. These moments and events can not happen without the support from all of you, the dedication from the staff, and the commitment and resilience that each child has shown.

Thank you all so much for your continued support and a massive well done to each child from KS1.



BECK ROW VALUES:

Bold

Expressive

Creative

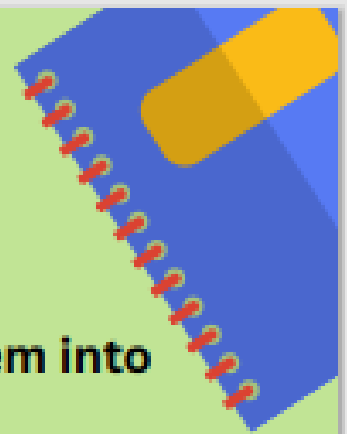
Kind

Respectful

Open-minded

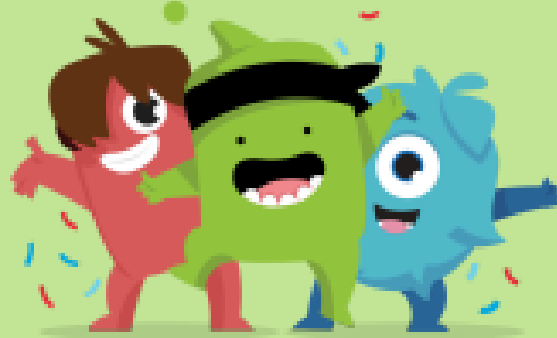
Willing





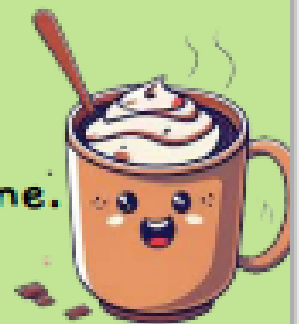
CLASS DOJOS

Receive Green Dojos and turn them into rewards!



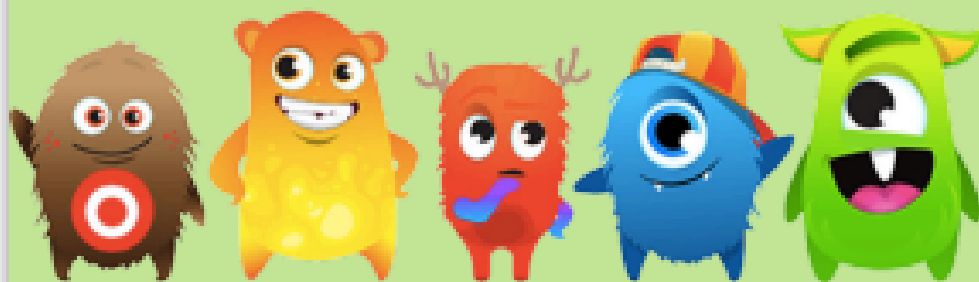
100 Green Dojos: a GOLDEN Ticket

500 Green Dojos: Hot chocolate at lunchtime.



1000 Green Dojos: Extra playtime!

2000 Green Dojos: A day trip out.



The Beck Row Way



Lovely Lining Up-
We line up in single
file and in silence.

Wonderful Walking -
We walk quietly with
our hands behind our
back or by our sides.

**Whole Body
Listening** - We sit
appropriately so we
can listen and focus.

No Opt Out- Our
teachers do not let
us give up on
answering.

Cold Calling - Our
teachers will
randomly pick us
to answer.

Right is Right - We
always know when
our answer isn't
quite good enough.



New Lunch Menu Spring Term

BECK ROW PRIMARY ADADEMY WEEK ONE

5th January 2026
26th January 2026

25rd February 2026
16th February 2026

Years 3 - 6
£2.95
per meal

MONDAY

Hot Main - Sausage with mashed potato
Hot Veggie - Quorn sausages with mashed potato
Dessert - Vanilla sponge, fruit pot, jelly or yogurt

WEDNESDAY

Hot Main - Roast chicken with stuffing and roast potatoes
Hot Veggie - Vegan toad in the hole
Dessert - Angel delight, fruit pot, jelly or yogurt

FRIDAY

Hot Main - Battered fish with chips
Hot Veggie - Cheese omelette and chips
Dessert - Iced sponge, fruit pot, jelly or yogurt

TUESDAY

Hot Main - Chilli con carne with rice
Hot Veggie - Bean/veggie chilli with rice
Dessert - Apple crumble with custard, fruit pot, jelly or yogurt

THURSDAY

Hot Main - Pork chow mein
Hot Veggie - Cheese and tomato pizza
Dessert - Jam sponge, fruit pot, jelly or yogurt

DAILY

- Tomato and basil pasta
- Jacket potato with choice of fillings
- Sandwich, wrap or roll with ham, cheese or tuna filling

BECK ROW PRIMARY ADADEMY WEEK TWO

12th January 2026
2nd February 2026

2nd March 2026
23rd March 2026

Years 3 - 6
£2.95
per meal

MONDAY

Hot Main - Beef bolognese
Hot Veggie - Vegetable spring roll with egg fried rice
Dessert - Fruit platter, jelly or yogurt

WEDNESDAY

Hot Main - Roast gammon, yorkshire pudding & roast potatoes
Hot Veggie - Baked bean lasagne
Dessert - Oat cookie, fruit pot, jelly or yogurt

FRIDAY

Hot Main - Southern fried chicken and chips
Hot Veggie - Quorn nuggets and chips
Dessert - Strawberry muffin, fruit pot, jelly or yogurt

BECK ROW PRIMARY ADADEMY WEEK THREE

19th January 2026
9th February 2026

9th March 2026

Years 3 - 6
£2.95
per meal

MONDAY

Hot Main - Sausage with mashed potato
Hot Veggie - Lentil & veggie cottage pie
Dessert - Vanilla sponge, fruit pot, jelly or yogurt

WEDNESDAY

Hot Main - Roast gammon, roast potatoes & yorkshire pudding
Hot Veggie - Quorn sausage, roast potatoes & yorkshire pudding
Dessert - Angel delight, jelly, fruit pot or yogurt

FRIDAY

Hot Main - Fish fingers & chips
Hot Veggie - Quorn dippers & chips
Dessert - Chocolate sponge, jelly, fruit pot or yogurt

TUESDAY

Hot Main - Chicken fajita wrap
Hot Veggie - Mac & cheese
Dessert - Chocolate raspberry fudge slice, jelly, fruit pot or yogurt

THURSDAY

Hot Main - Pepperoni pizza
Hot Veggie - Cheese & tomato pizza
Dessert - Strawberry cheesecake, jelly, fruit pot or yogurt

DAILY

- Tomato and basil pasta
- Jacket potato with choice of fillings
- Sandwich, wrap or roll with ham, cheese or tuna filling

All meals should be paid in advance via MCAS
Reception - Year 2 entitled to Universal infant free school meals

Available to book now.....

AFTER SCHOOL CLUBS

BECKS ROW PRIMARY ACADEMY

SCHOOL PLAYGROUND, BECK ROW PRIMARY SCHOOL, THE STREET, BURY ST. EDMUNDS, IP28 8AE
START W/C 6TH JAN - 12TH FEB (5 WEEKS)
15:20PM - 16:20PM

| | |
|--|---|
| Monday Fun Factory (KS1) (5yrs-7) FREE | Tuesday Multisports (KS2) (7- 11yrs) FREE |
| Wednesday Basketball KS1 & KS2 (5yrs-11yrs) FREE | Thursday Football (KS1) (5yrs-7) FREE |

To BOOK:
Visit www.superstarsport.co.uk
Go to "Book Now" & select your club!



Beck Row Buddies is the school Parent Teacher Association (PTA). We run events for the children, working together with the school, to help with fundraising for additional resources and equipment. We also run non-fundraising events for the children's enjoyment.

All parents are welcome to attend our meetings, which are short and informal, to discuss and plan new events and how you can get involved.

Please join our facebook group 'Beck Row Buddies' where we post regular updates on events and information. If you are interested in joining our welcoming team or volunteering at any events, please contact us at Beckrow-buddies@hotmail.com.

Spotlight on...expressive language

Having previously focused on speech sounds and receptive language (see the Newsletters section of our website for details), the last area of speech we are spotlighting is expressive language.



Expressive language is the process of putting ideas into words (either spoken or written) and covers the following areas:

- * Vocabulary and the meaning of words (semantics)
- * Morphology (word formation including tenses, plurals, prefixes, suffixes etc)
- * Syntax (the order of words)
- * Narrative (the telling of stories)

We assess expressive language using [Talk Boost](#), [WellComm](#) and Blank's level questions. These identify children who need more support.

We use Talk Boost interventions to improve expressive vocabulary and Colourful Semantics to help with sentence construction. We may also refer a child to the NHS for speech & language therapy.

How can you help?

Daily reading out loud (both you and the child) and asking them questions about the book. You can model good answers first if they are struggling.

Asking the child to comment on what they see, hear, feel, smell, can touch around them.

Using Makaton signs together with words (children learn many of these in Early Years and there are lots of free teaching videos on the internet).

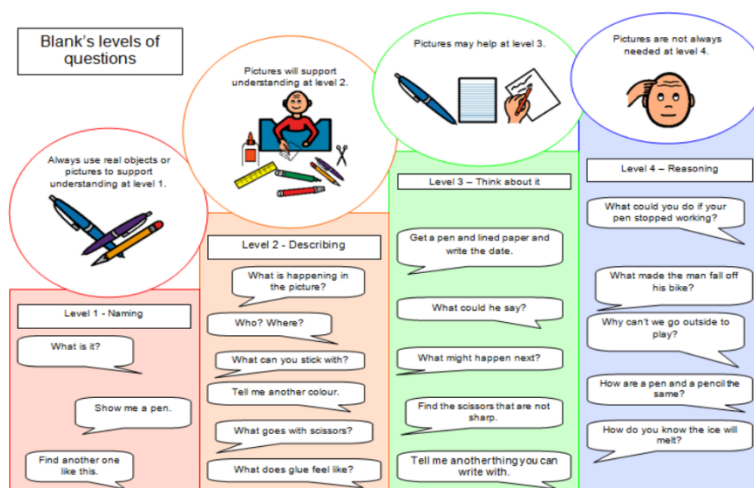
Giving prompt words if they are struggling to describe something.

Multi-sensory learning (by asking them to say the name of an object/picture as they touch it).

Using Colourful Semantics when talking to them in sentences. (There is lots of free information on the internet, such as this [NHS booklet](#)).

Asking Blank's level questions about books/the world around you.

If you have any questions or concerns about your child's expressive language, please contact your class teacher, Mrs Bailey or our **new SENDCO who starts after Christmas - Miss Brown.**



Yr6: Museum of Zoology

This week, Year 6 enjoyed a wonderful educational visit to the Museum of Zoology in Cambridge. The children were highly engaged as they explored the museum's impressive collection, which includes a wide variety of animal specimens from different habitats and time periods. They showed great curiosity as they observed the exhibits closely and asked thoughtful questions throughout the visit.

A particular highlight for many pupils was the hands-on session, where they had the opportunity to carefully handle and examine real animal skulls. This practical experience helped deepen their understanding of animal adaptation, diet, and structure, and linked perfectly with their learning in school. The children represented the school brilliantly and thoroughly enjoyed the day, making it both a fun and valuable learning experience for everyone involved.



Attendance

Our Current attendance is 95%



It can be tricky deciding whether or not to keep your child off school when they're unwell. Please always ensure that you telephone the office before 9.30am on the morning of any absence. If your child is absent for 5 days or more, you will be asked to provide medical evidence in line with our attendance policy.

There are government guidelines for schools about health protection and managing specific illnesses at GOV.UK. A link to this information can be found [here](#)

School Day Timings

Main Gates Open – 8.40am

Classroom Doors Open – 8.50am

School Day starts – 8.50am

School Day Finishes – 3.20pm

MERRY
Christmas

& A Happy New Year
From All at Beck Row Primary Academy



BEC-admin@attrust.org.uk



01638 713001



beckrow.attrust.org.uk



@BeckRowAcademy



The Street, Beck Row, Bury St Edmunds,
Suffolk, IP28 8AE