

Plant Survival

Plants are living things that change with the seasons. They grow in different habitats.



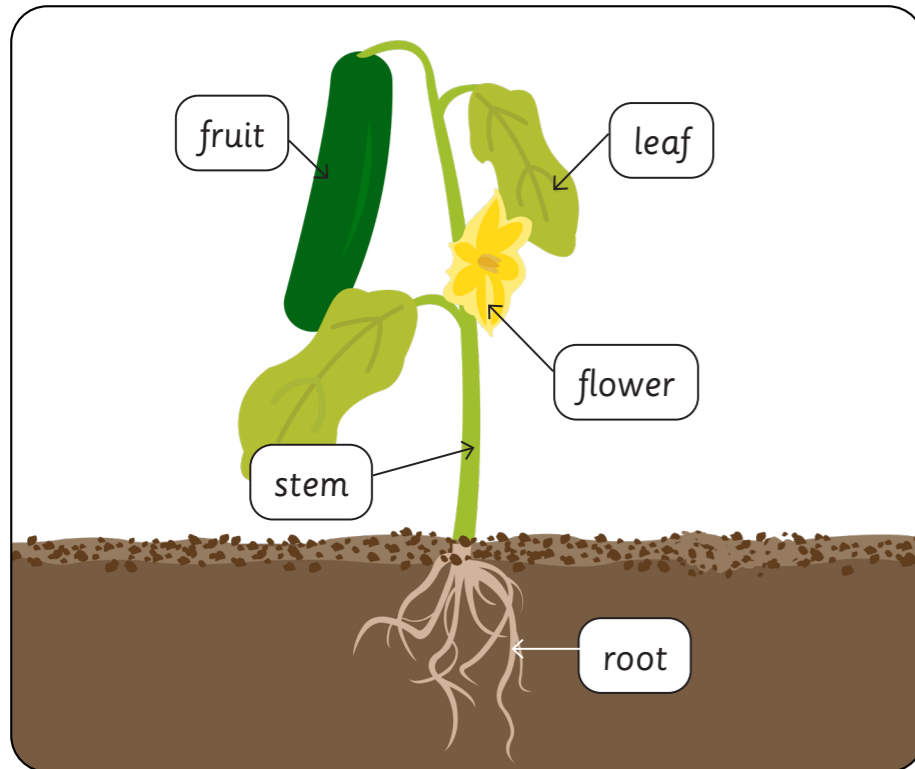
Cacti grow in desert habitats.



Daisies grow in meadow habitats.

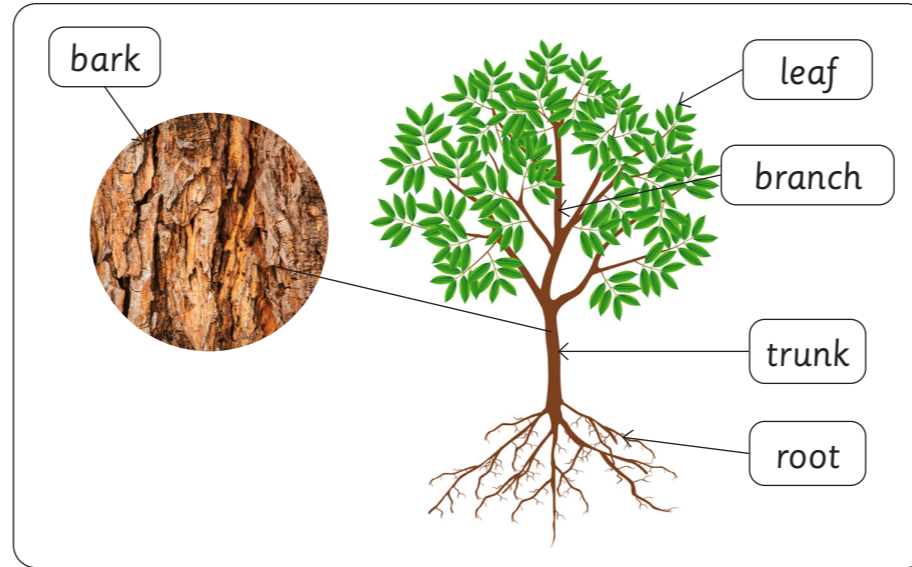
Plant parts

A plant has different parts. These include roots, a stem and leaves. Some plants have flowers and fruit, such as the cucumber plant.



Trees

Trees are plants. They have roots, a stem called a trunk, bark, branches and leaves.



Trees can be deciduous or evergreen. Deciduous trees lose their leaves in autumn and have bare branches in winter. Evergreen trees shed old leaves and grow new leaves all year round, which means they keep their leaves in winter.



deciduous trees in winter



evergreen trees in winter

Leaves

Leaves come in different shapes and sizes. They make food for the plant.



Bulbs

Some plants grow from bulbs. A bulb contains a tiny plant and all the food the plant needs to grow.



daffodil bulbs

Seeds

Some plants grow from seeds. A seed is a small object that a plant makes. It contains a tiny, young plant and a store of food that the plant needs to start growing before it can make food from sunlight.



planting seeds



Germination

Germination is the first stage of plant growth when a seed starts to grow.

Seeds need warmth and water to germinate.

Seeds do not need light to germinate because they start to grow underground in the dark.

The food stored inside the seed helps it to start growing.



After germination

Some time after germination, a shoot appears above the soil. The shoot develops into a stem and leaves. The leaves unfold and start to make food for the growing plant. The plant uses its roots to take in nutrients and water from the soil. The plant grows bigger over time. Some plants develop flowers and fruit.



What plants need to grow

Plants need sunlight, warmth, nutrients, water, air and space to grow and be healthy.

sunlight

Plants need sunlight to make food. In shady places, plants grow slowly.

warmth

Plants need warmth to help them make food and grow quickly.

nutrients

Plants need nutrients to help them grow well and fight diseases. Nutrients are taken from the soil through the roots.

water

Plants take in water through their roots. The water carries nutrients around the plant.

air

Plants take in a gas from the air, called carbon dioxide, through their leaves. They need this gas to make food.

space

Plants need space to grow. If an area is overcrowded, the nutrients and water in the soil are used up. Overcrowding also blocks sunlight.

Unusual plants

Not all plants need the same things to grow well. Some unusual plants in the world have developed ways to survive in their habitats. Reindeer moss survives in cold polar habitats. It is inactive for long periods of time to save energy.



reindeer moss



healthy aubergine plant



unhealthy aubergine plant

Glossary

germinate	When a seed starts to grow.
habitat	The place where a plant or animal lives, such as a woodland or desert.
season	One of the four periods of the year, including winter, spring, summer and autumn.

